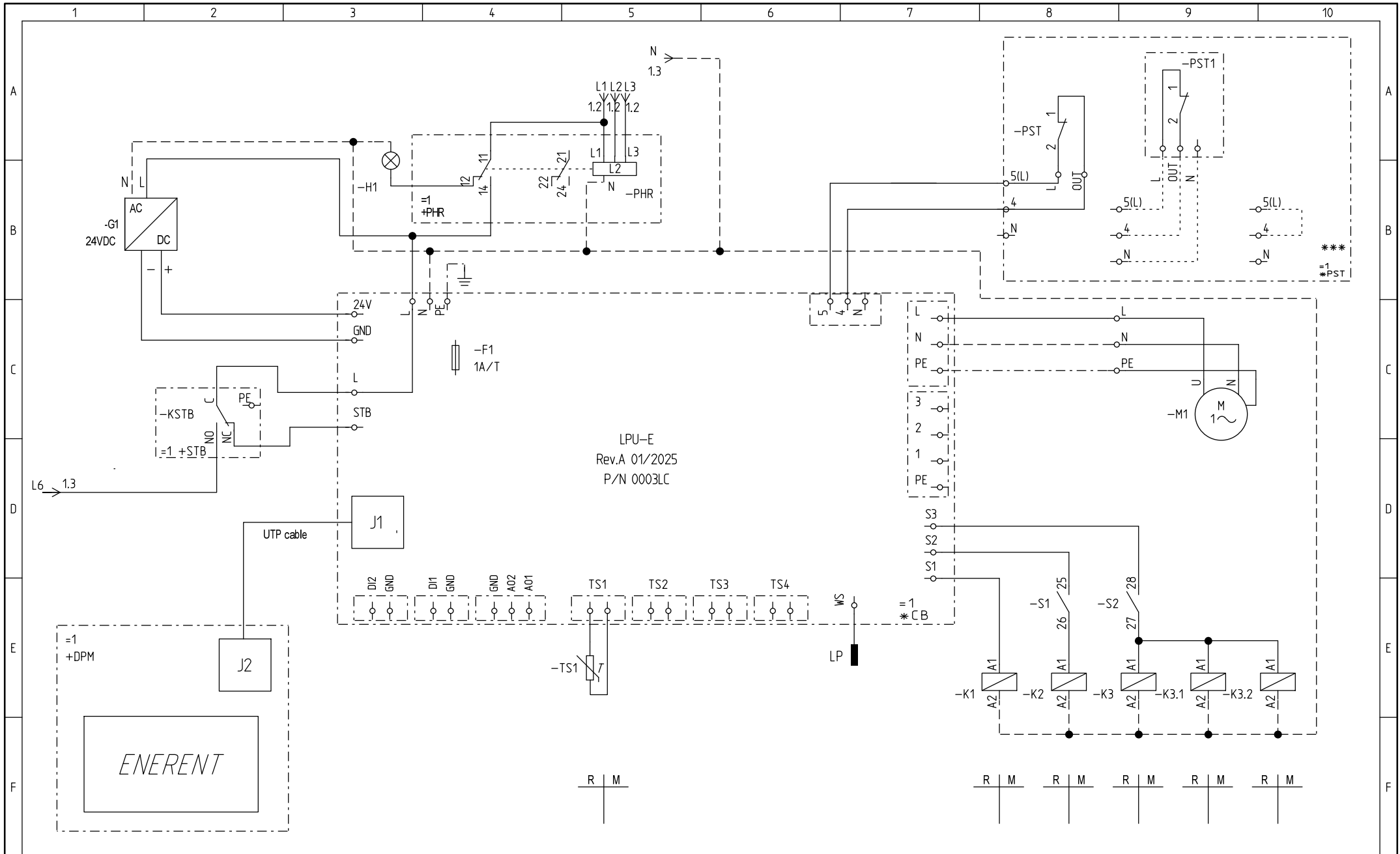
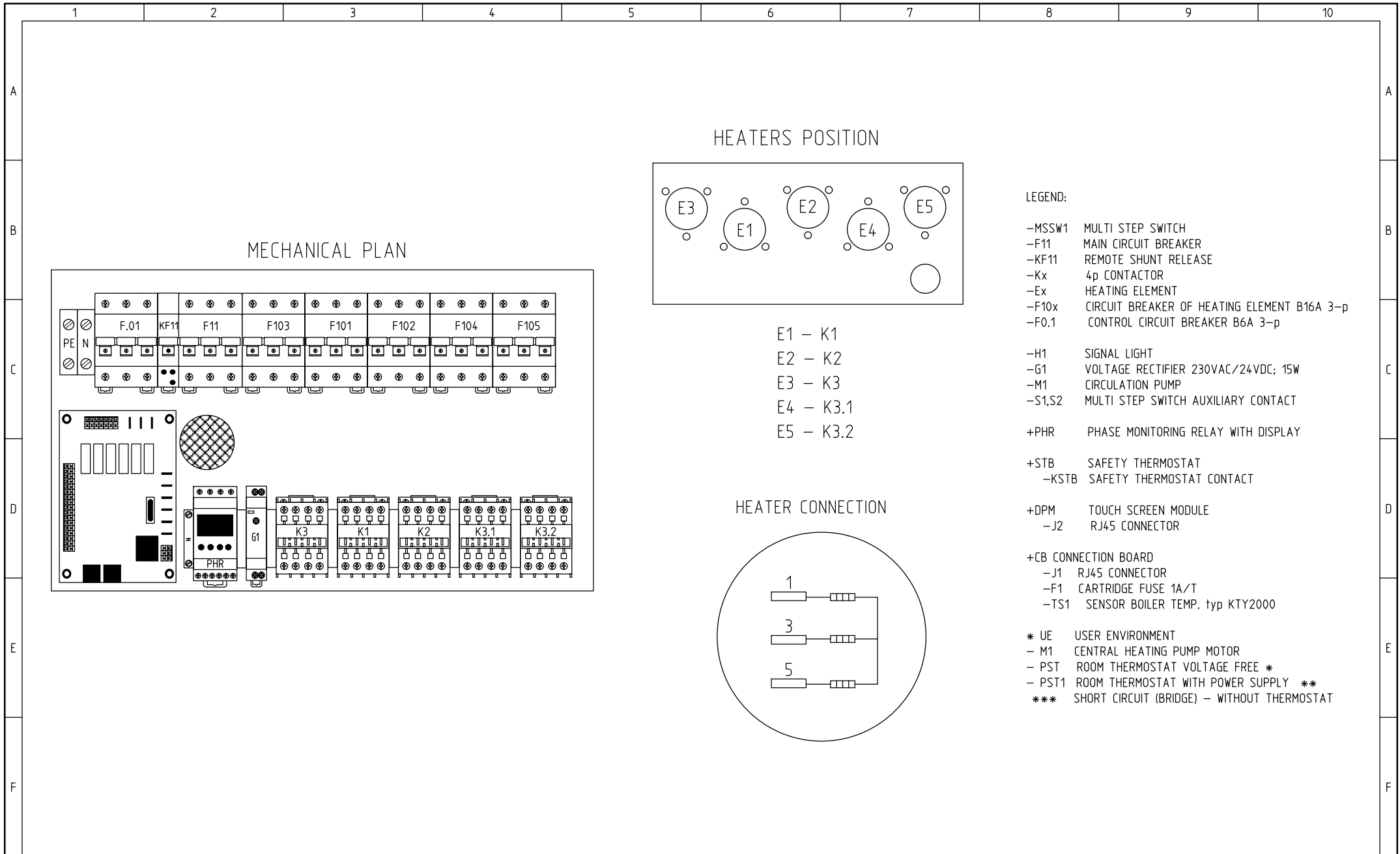


POWER SUPPLY: 400V 3N~ 50/60 Hz					HEATER CONNECTIONS (S1+S2+S3) kW				
P(kW)	In(A)	If(A)	Qmin(mm2)	MCB - F11 (A)	E1	E2	E3	E4	E5
8	11,54	20	4	B63	8	8	8	8	8
16	23,19	32	6		8	8	8	8	8
40	57,97	63	16		8	8	(8+ 8+ 8)	8	8

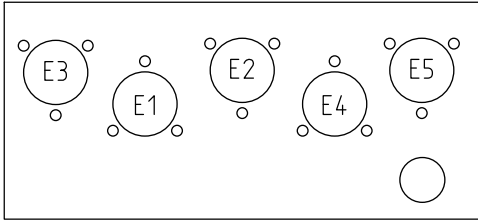
NOT USED





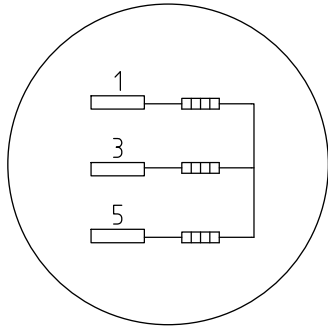
MECHANICAL PLAN

HEATERS POSITION



- E1 – K1
- E2 – K2
- E3 – K3
- E4 – K3.1
- E5 – K3.2

HEATER CONNECTION



LEGEND:

- MSSW1 MULTI STEP SWITCH
- F11 MAIN CIRCUIT BREAKER
- KF11 REMOTE SHUNT RELEASE
- Kx 4p CONTACTOR
- Ex HEATING ELEMENT
- F10x CIRCUIT BREAKER OF HEATING ELEMENT B16A 3-p
- F0.1 CONTROL CIRCUIT BREAKER B6A 3-p

- H1 SIGNAL LIGHT
- G1 VOLTAGE RECTIFIER 230VAC/24VDC; 15W
- M1 CIRCULATION PUMP
- S1,S2 MULTI STEP SWITCH AUXILIARY CONTACT

- +PHR PHASE MONITORING RELAY WITH DISPLAY

- +STB SAFETY THERMOSTAT
- KSTB SAFETY THERMOSTAT CONTACT

- +DPM TOUCH SCREEN MODULE
- J2 RJ45 CONNECTOR

- +CB CONNECTION BOARD
- J1 RJ45 CONNECTOR
- F1 CARTRIDGE FUSE 1A/T
- TS1 SENSOR BOILER TEMP. typ KTY2000

- * UE USER ENVIRONMENT
- M1 CENTRAL HEATING PUMP MOTOR
- PST ROOM THERMOSTAT VOLTAGE FREE *
- PST1 ROOM THERMOSTAT WITH POWER SUPPLY **
- *** SHORT CIRCUIT (BRIDGE) – WITHOUT THERMOSTAT